

geodyna 4800 L

Ersatzteilliste
Spare parts list
Liste des pièces détachées

Radauswuchtmaschine für LKW
Wheel balancer for truck wheels
Equilibreuse de roues de poids-lourds

HOFMANN®





DIESER ABSCHNITT IST AUSSCHLIESSLICH DEM WARTUNGSFACH-UND KUNDENDIENSTPERSONAL VORBEHALTEN

THIS PART IS FOR EXCLUSIVE USE OF QUALIFIED PERSONNEL FOR MAINTENANCE AND SERVICE PURPOSES.

CETTE PARTIE EST RESERVEE AU PERSONNEL QUALIFIE ET AUTORISE A LA MAINTENANCE ET AU SERVICE APRES-VENTE.

QUESTA PARTE É AD USO ESCLUSIVO DEL PERSONALE QUALIFICATO ED AUTORIZZATO ALLA MANUTENZIONE ED ASSISTENZA.

ESTA PARTE ES PARA USO EXCLUSIVO DEL PERSONAL CALIFICADO Y AUTORIZADO PARA EL MANTENIMIENTO Y LA ASISTENCIA.

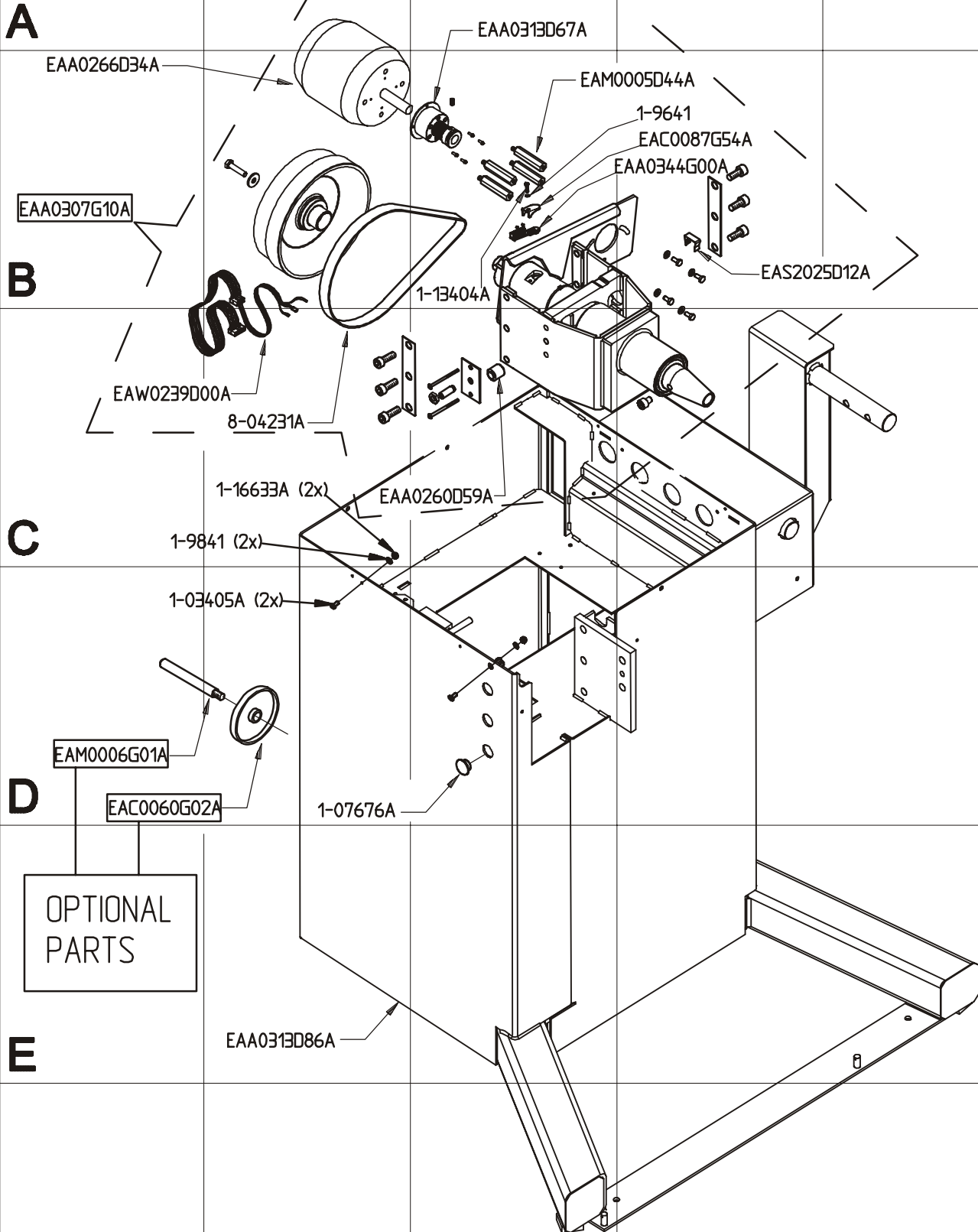
ESTA PARTE ES PARA USO EXCLUSIVO POR PESSOAL ESPECIALIZADO ED AUTORIZATO A LA MANUTENÇÃO

- **Bei Auftragserteilung anzugeben:** Maschinentype, Serinnummer, Artikel-Code, Menge.
- **On order specify:** type of machine and serial number item code and quantity.
- **A la commande:** bien préciser le type de la machine, le n° de serie, la référence de pièce, la quantité.
- **All'ordine specificare:** tipo macchina e matricola, codice e quantità del particolare.
- **En cada pedido hay que especificar:** el tipo de màquina y su nùmero de matricula, el nùmero de còdigo de la pieza requerida y su cantidad.
- **Na encomenda especifique:** tipo da máquina e número de série, codigo do item e quantidade.

Note:

Ex. 0011111 - BOLD TYPE CODES ON TABLES MEANS SUGGESTED SPARE PARTS

1400.c



03/2007

1401.a

A

B

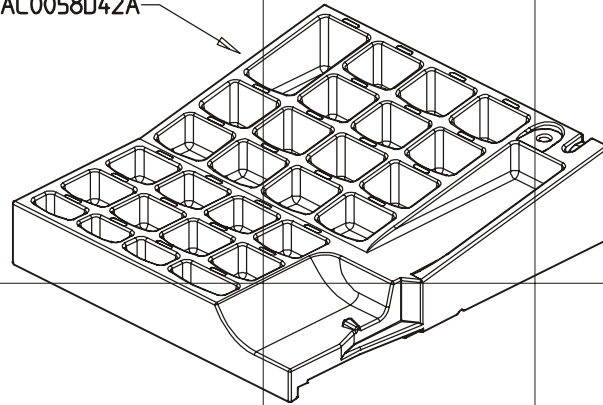
C

D

E

F

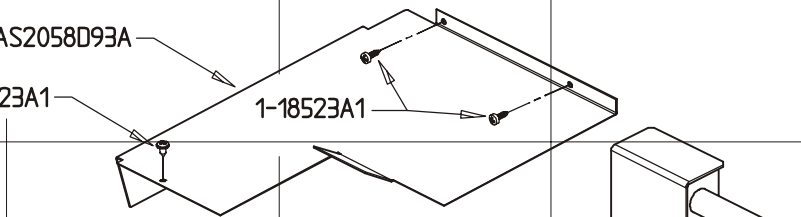
EAC0058D42A



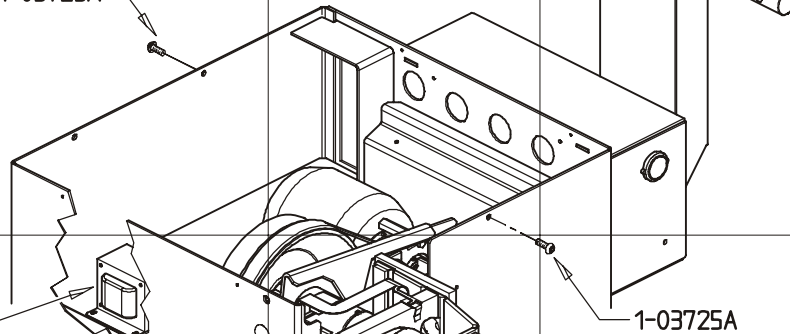
(115 Volts) EAS2058D93A

1-18523A1

1-18523A1

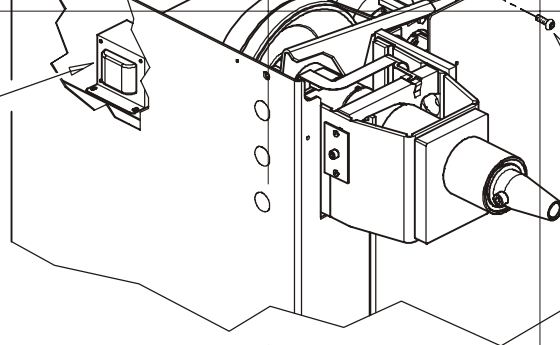


1-03725A

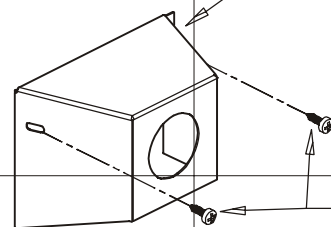


(115Volts) 7-00902A

1-03725A



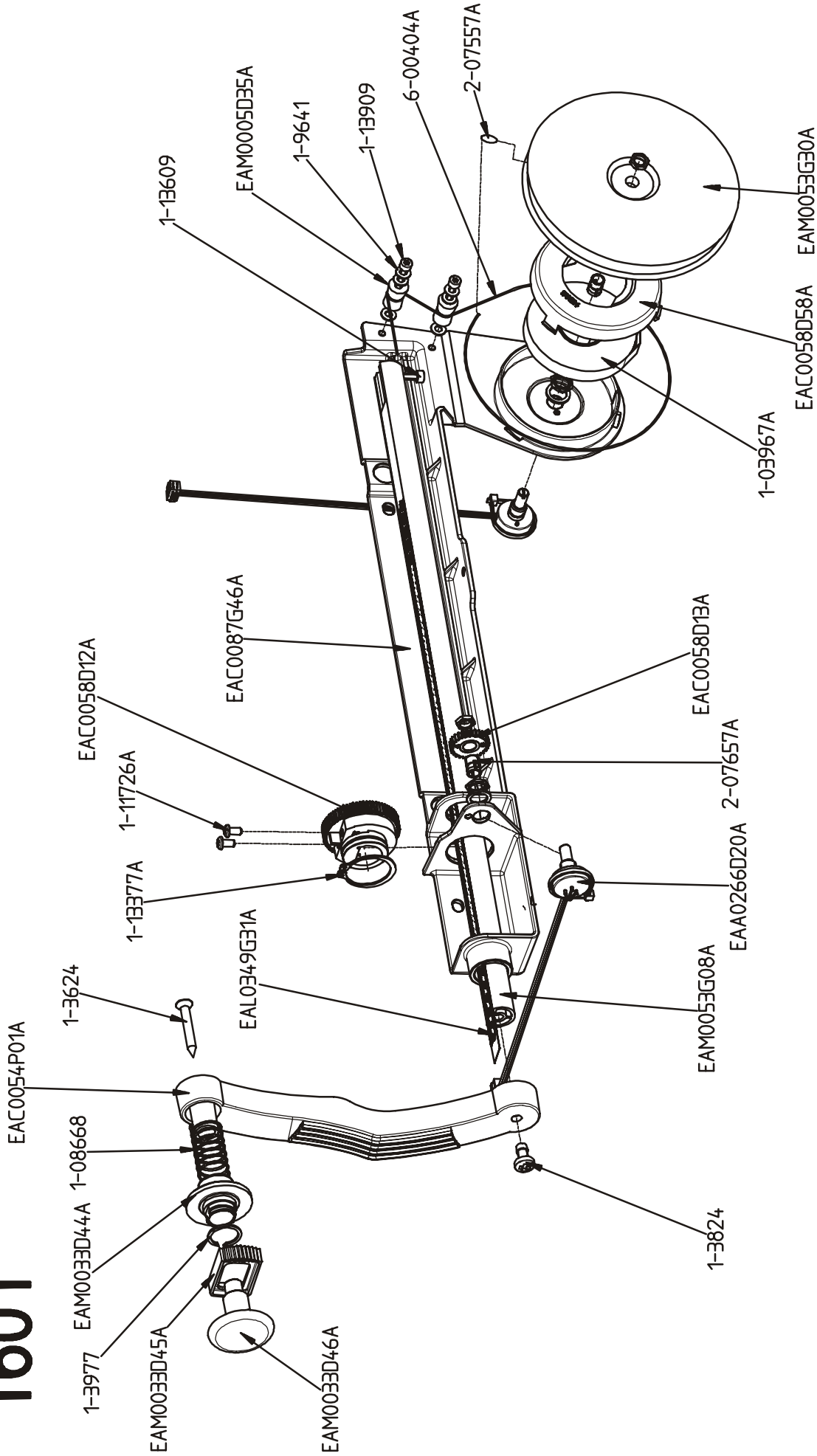
EAS2058D59A

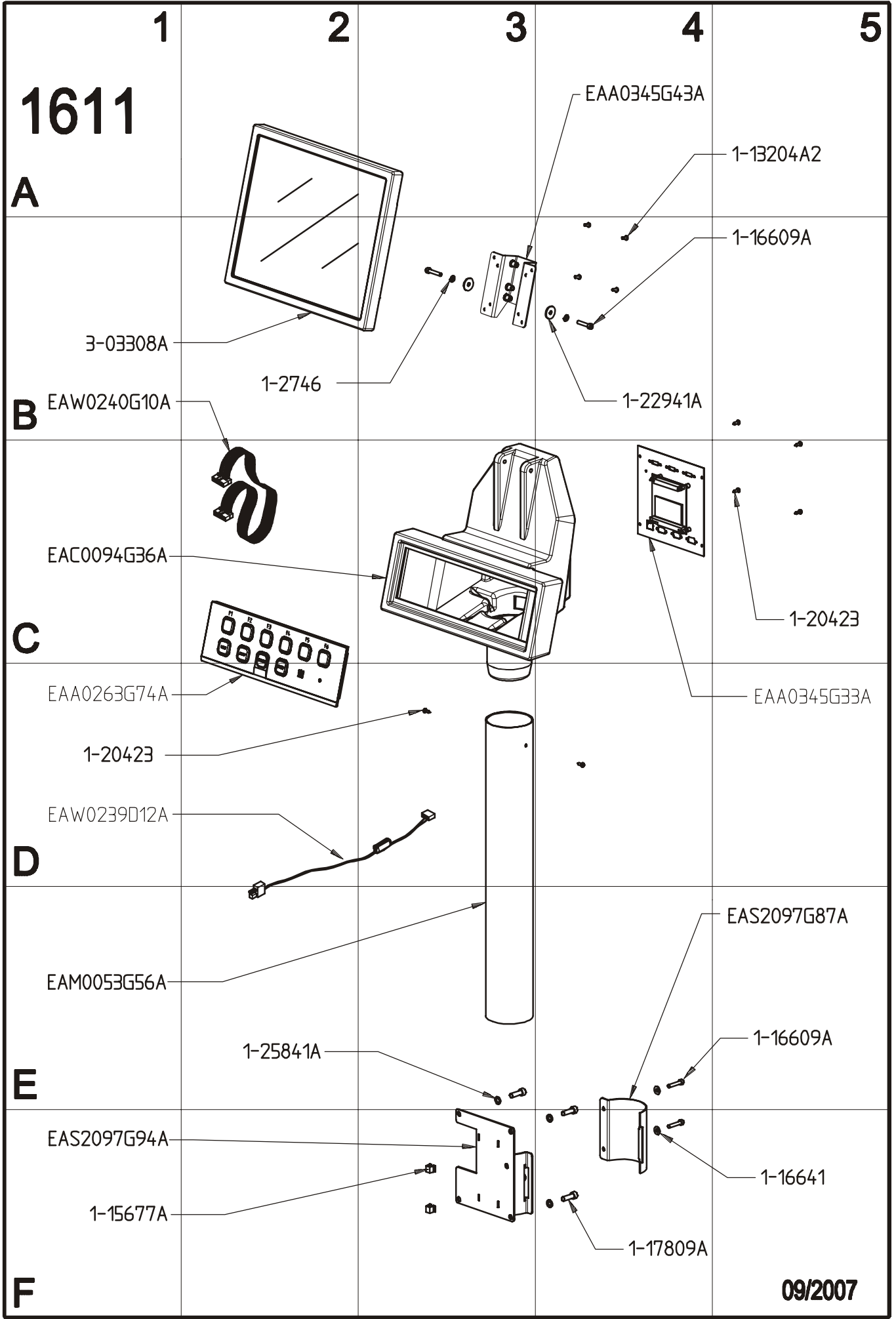


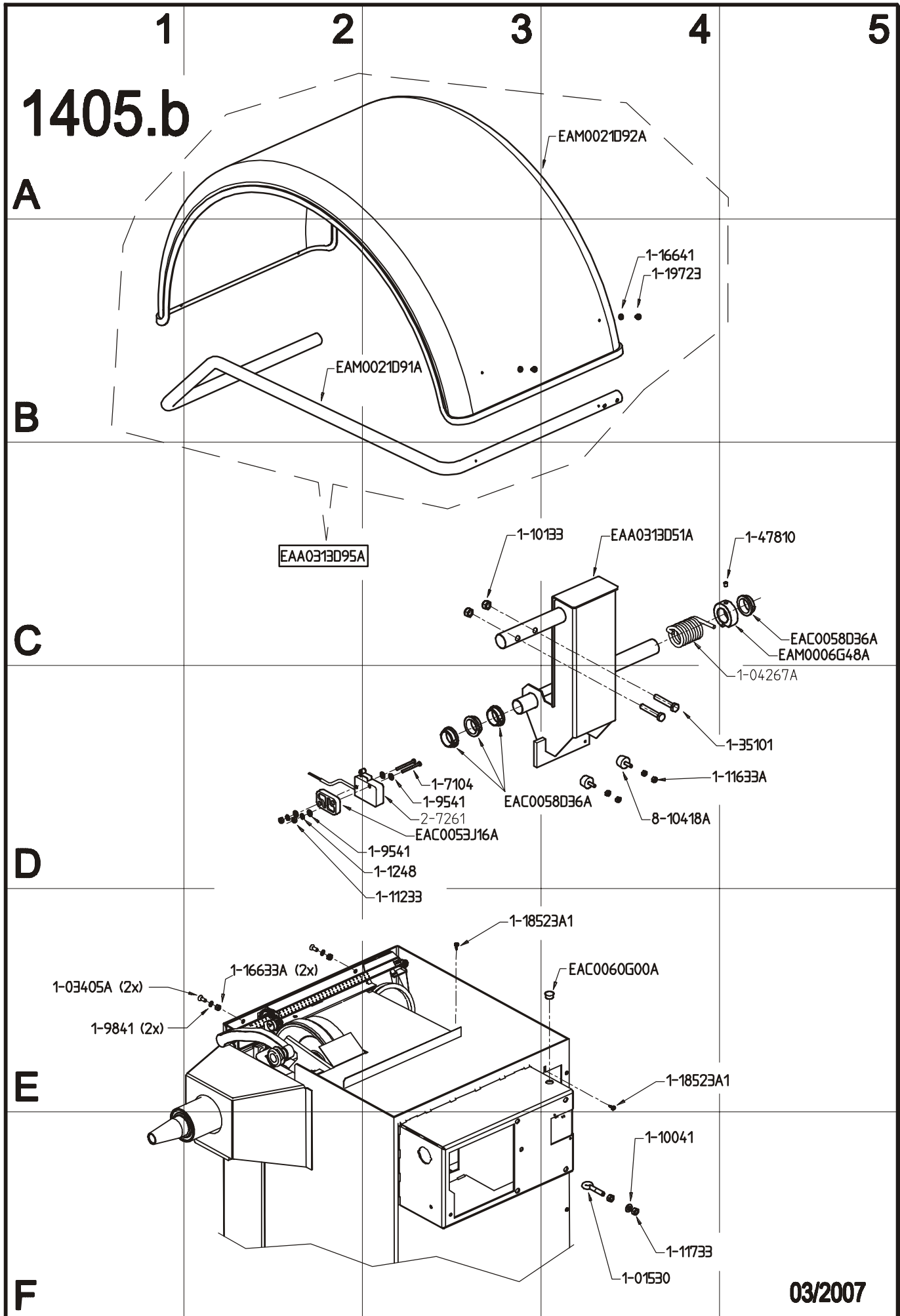
1-18523A1

10/2004

1601







03/2007

1406.b

A

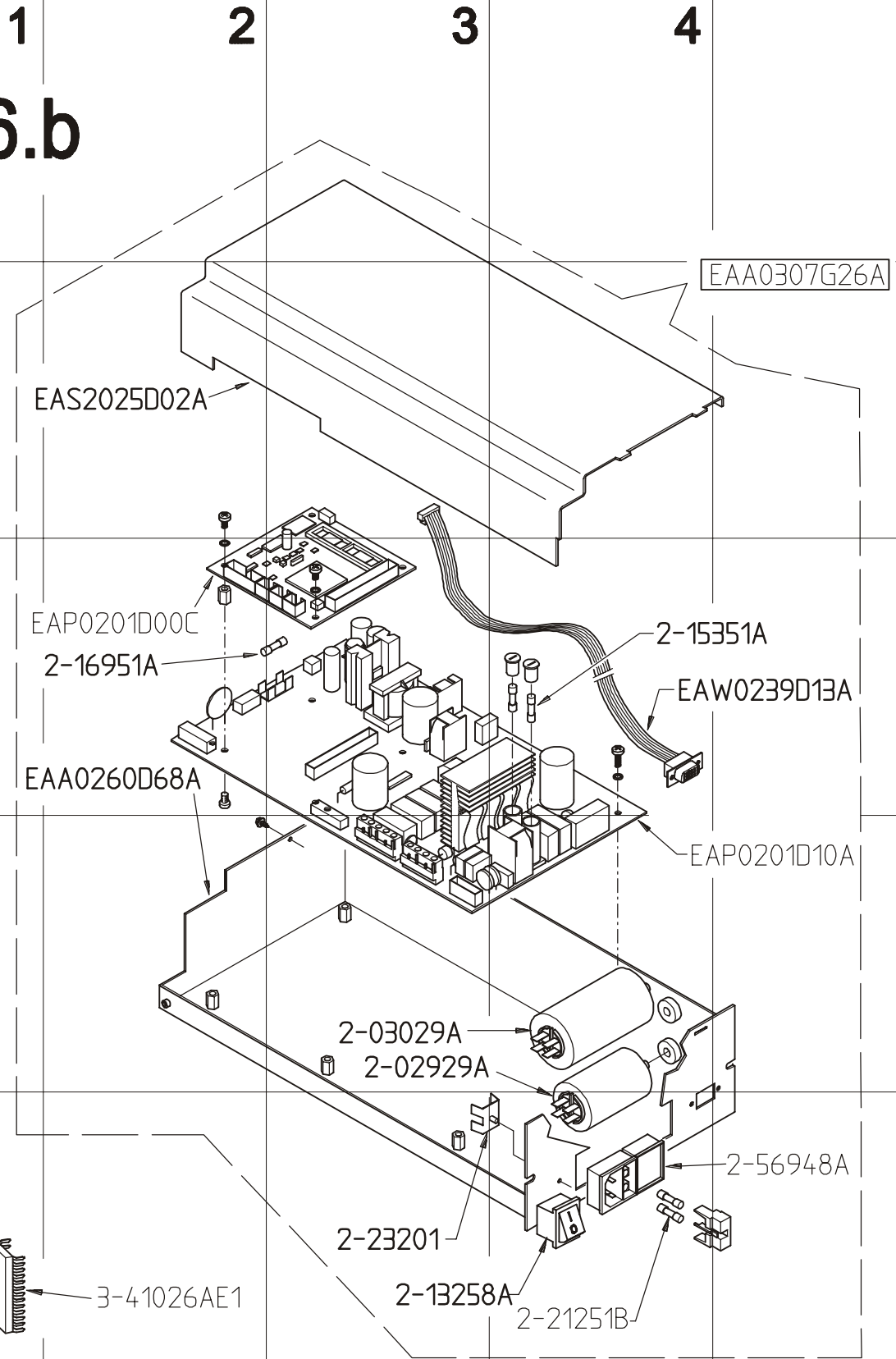
B

C

D

E

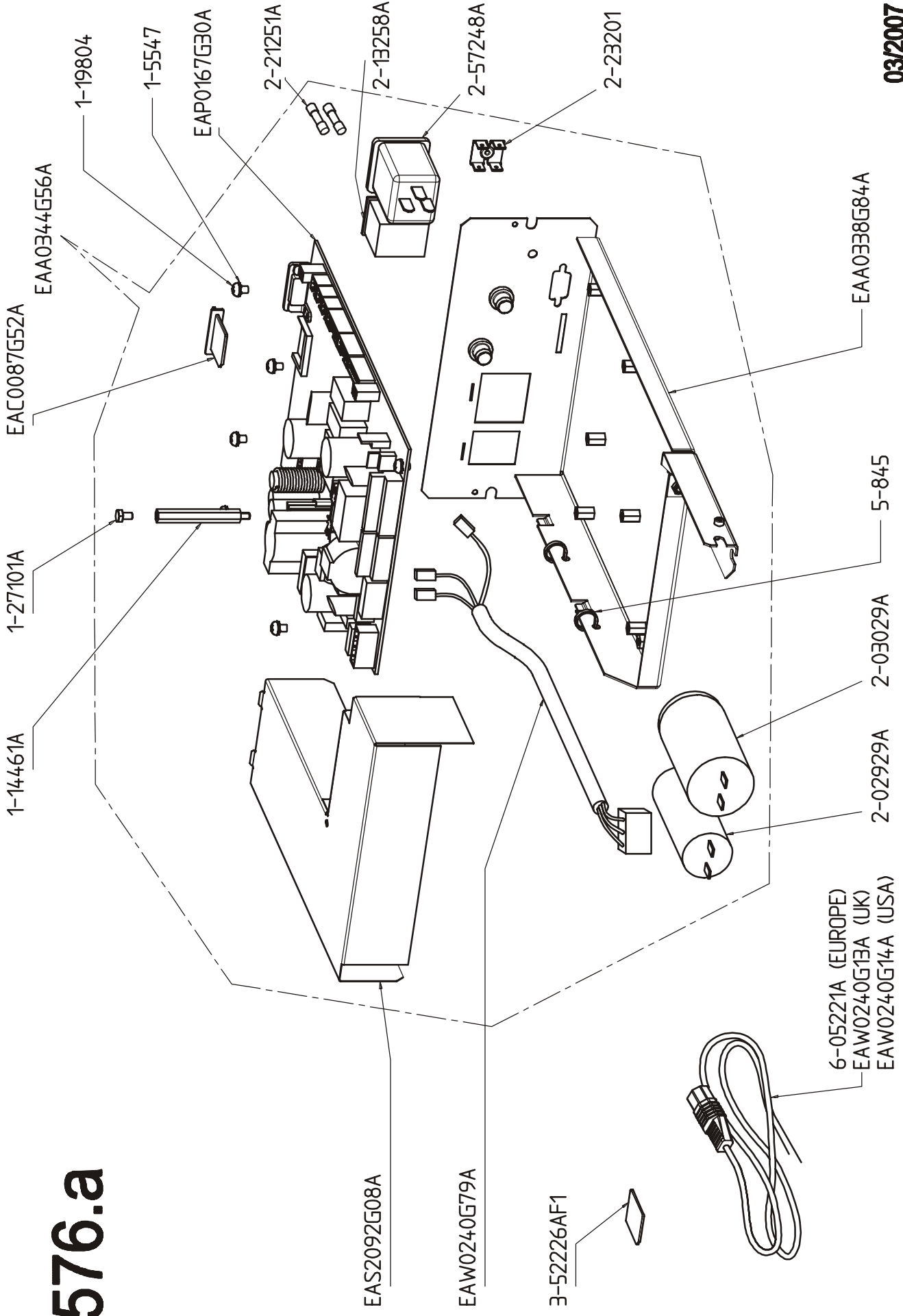
F



09/2006

1576.a

174-g-November-07



1407.a

A

B

C

D

E

F

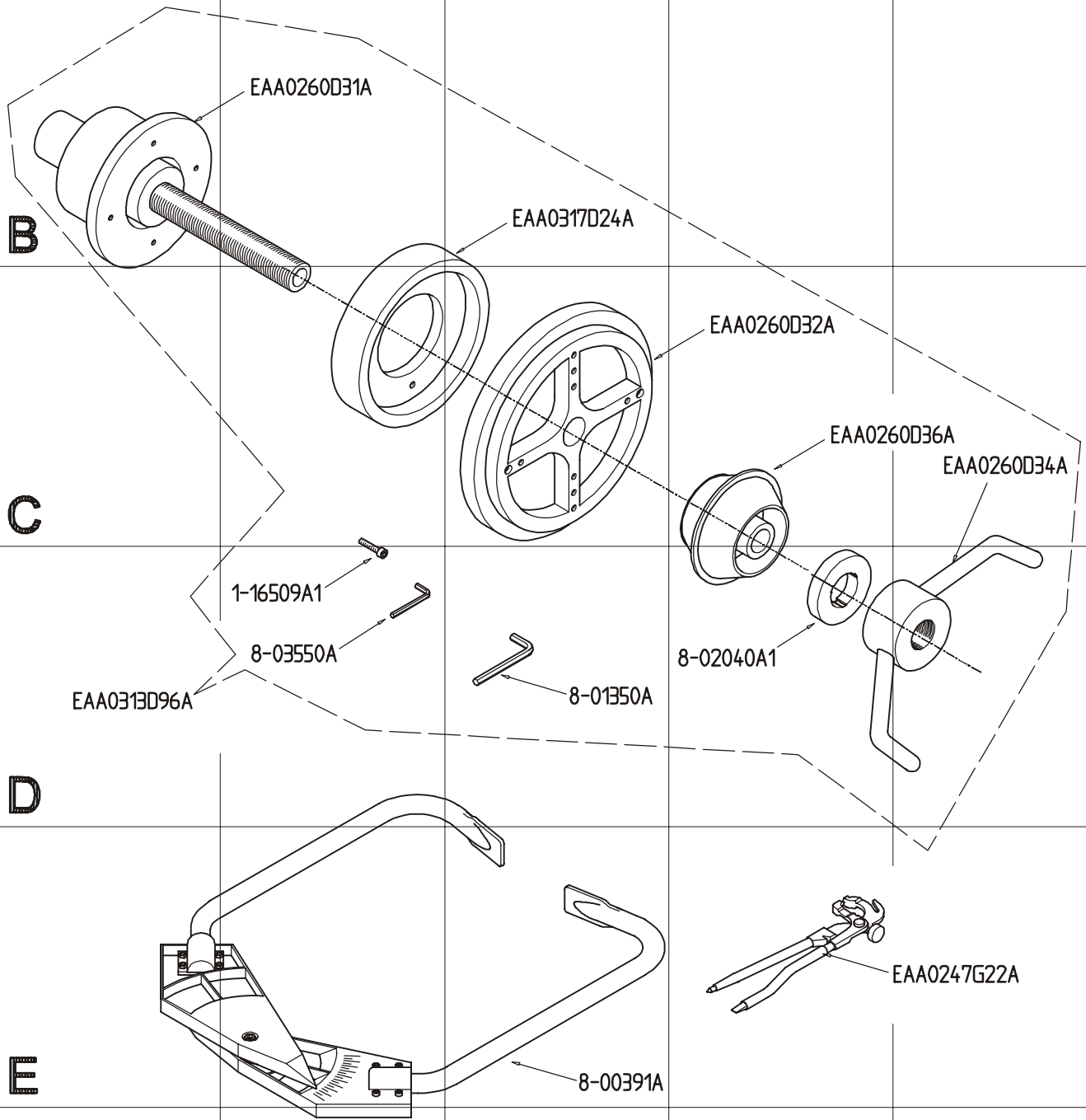
1

2

3

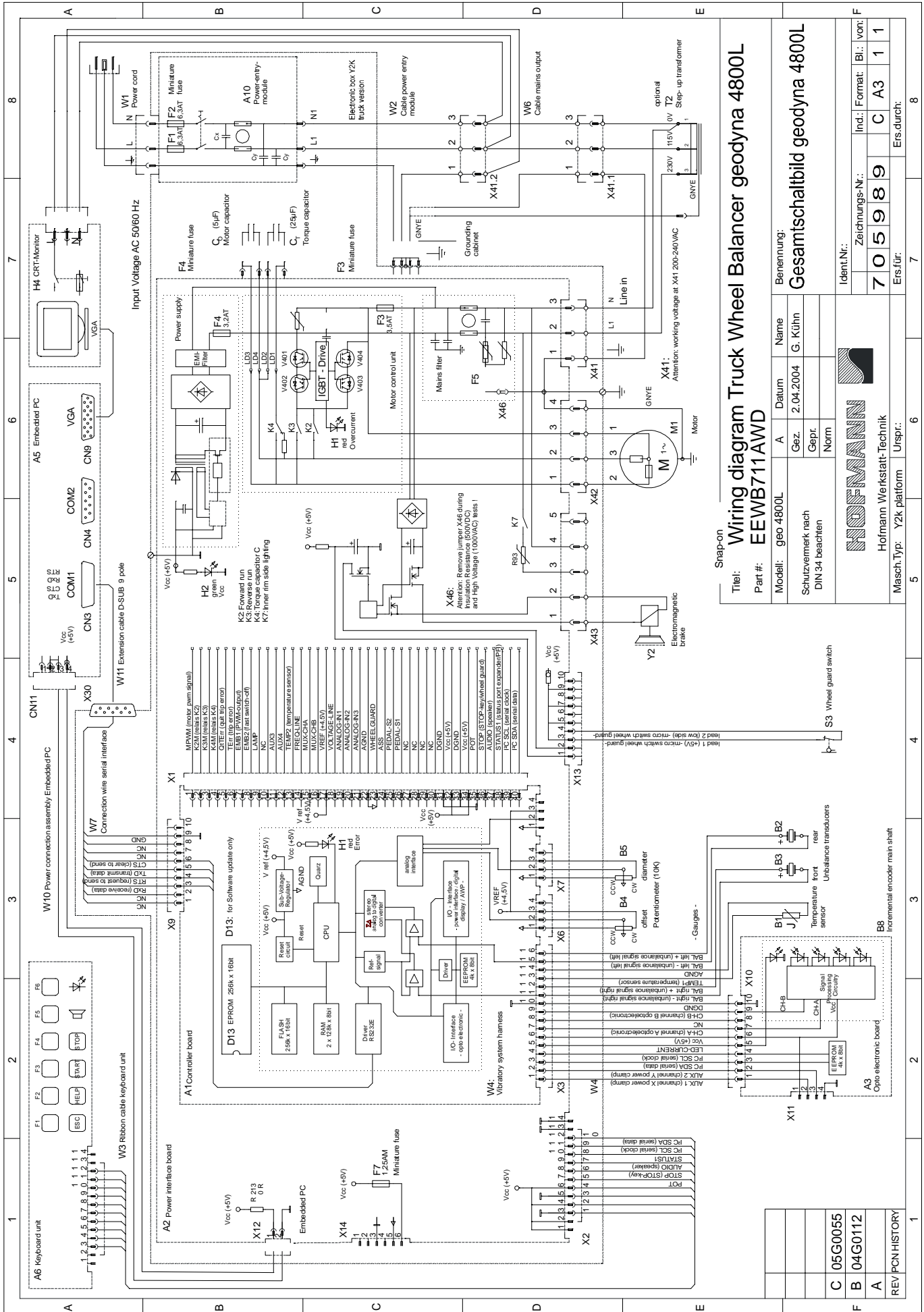
4

5



10/2004

Retrofit BOX Wire Diagram

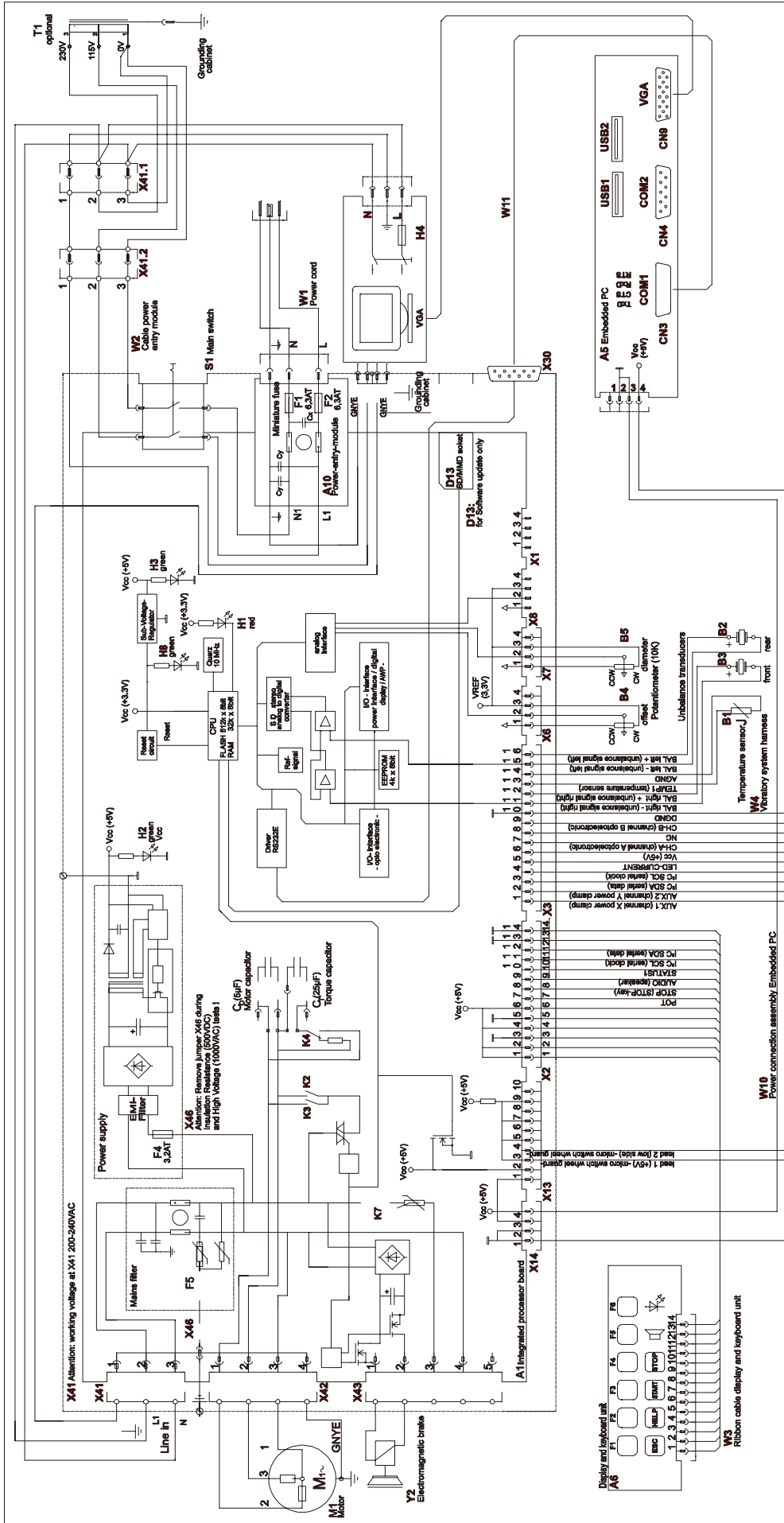


Wiring diagram Truck Wheel Balancer geodyna 4800L
Part #: EEWB711AWD

Modell:	geo 4800L	A	Datum	2.04.2004	G. Kühn	
Benennung:	Gesamtschaltbild geodyna 4800L					
Gez.	Schutzvermerk nach DIN 34 beachten					
Gepr.	Norm					
Ident.Nr.:						
Urspr.:	Hofmann Werkstatt-Technik					
Masch. Typ.:	Y2k platform					
Zeichnungs-Nr.:	7	0	5	9	8	9
Incl. Format:	C		A3		1	
Ers.für.:	C		A3		1	
Ers.durch.:	C		A3		1	

174-g-November-07

IBP Whire Diagram (Integrated Board)



DENOMINAZIONE: SCHEMA ELETTTRICO Geodyna 4800L		FAMIGLIA: COD. GS: 0030571	
THE DATA, DRAWINGS, AND INFORMATION CONTAINED IN THIS DOCUMENT IS CONFIDENTIAL AND THE SOLE PROPERTY OF SNAP-ON, AND MAY NOT BE REPRODUCED, USED, OR DISCLOSED WITHOUT WRITTEN PERMISSION OF AN OFFICER OF SNAP-ON.			
MATERIAL		COPYRIGHT	
UNLESS OTHERWISE SPECIFIED GENERAL TOLERANCES		CORREGGIO, ITALY	
OVER 0.5 TO 0.0 ± 0.1		WIRING DIAGRAM	
OVER 0.0 TO 0.30 ± 0.2		Truck Wheel Balancer	
OVER 0.30 TO 1.20 ± 0.3		Geodyna 4800L	
OVER 1.20 TO 10 ± 0.5		RELEASE REV D	
ANGULAR ± 1°		EEWB71AWD	
HOLES ± 0.1		SHEET 1 OF 1	
SHEET METAL ± 0.5			
SURFACE: ISO 1302			
FIRST ANGLE PROJECTION			

REV	DATE	NAME
D	2007.01.15	N. Castagnoli
C	2004.04.02	G. Kuehn
A		

REV	PCN HISTORY	CHANGES - MODIFICHE
D	Introduced IBP electronic box	
C		
A	Production release	

BLANK PAGE

DOCUMENTATION UPDATING LIST

Revision B	Differences on previous version.	from October 2004
- 1400.a	HWT CODE REPLACED WITH SNAP-ON CODE	
- 1401.a	HWT CODE REPLACED WITH SNAP-ON CODE	
- 1404.a	HWT CODE REPLACED WITH SNAP-ON CODE	
- 1441.a	HWT CODE REPLACED WITH SNAP-ON CODE	
- 1405.a	HWT CODE REPLACED WITH SNAP-ON CODE	
- 1406.a	HWT CODE REPLACED WITH SNAP-ON CODE	
- 1407.a	HWT CODE REPLACED WITH SNAP-ON CODE	

<p>MODIFIED / CHANGED PARTS Regarding Revision C - July 2006</p> <p>List of updated tables from this revision:</p>	
<p>REMOVED: 1441.a</p> <p>APPLIED: 1441.b</p> <p><i>PCN n°:</i> 06G0066</p>	

<p>MODIFIED / CHANGED PARTS Regarding Revision D - October 2006</p> <p>List of updated tables from this revision:</p>	
<p>REMOVED: 1406.a</p> <p>APPLIED: 1406.b</p> <p><i>PCN n°:</i> 06G0127</p>	

<p>MODIFIED / CHANGED PARTS Regarding Revision E - November 2006</p> <p>List of updated tables from this revision:</p>	
<p>REMOVED: 1400.a</p> <p>APPLIED: 1400.b</p> <p><i>PCN n°:</i> 06G0135</p>	

<p>MODIFIED / CHANGED PARTS Regarding Revision F - March 2007</p> <p>List of updated tables from this revision: List of updated wire diagram from this revision:</p>		
<p>REMOVED: =</p> <p>APPLIED: 1576.a</p> <p><i>PCN n°:</i> 06G0187</p>	<p>REMOVED: =</p> <p>APPLIED: EEWB711AWD_C</p> <p><i>Note:</i> Specific for Retrofit BOX</p>	<p>REMOVED: =</p> <p>APPLIED: EEWB711AWD_D</p> <p><i>Note:</i> Specific for IBP BOX</p>

<p>MODIFIED / CHANGED PARTS Regarding Revision G - November 2007</p> <p>List of updated tables from this revision:</p>				
<p>REMOVED: 1404.a</p> <p>APPLIED: 1601</p> <p><i>PCN n°:</i> 07G0024</p>	<p>REMOVED: 1405.b</p> <p>APPLIED: 1405.a</p> <p><i>PCN n°:</i> 07G0024</p>	<p>REMOVED: 1400.b</p> <p>APPLIED: 1400.c</p> <p><i>PCN n°:</i> 07G0024</p>	<p>REMOVED: 1441.b</p> <p>APPLIED: 1611</p> <p><i>PCN n°:</i> 07G0026</p>	

SOE Digital Code: SP GEODYNA 4800L 11-07 TEEWB711A3_RG

**Snap-on Equipment GmbH · Geschäftsbereich Hofmann Werkstatt-Technik · PF 1202 · D-64311 Pfungstadt
Service Tel. +49 6157 12-482 · Fax +49 6157 12-484 · www.hofmann-ge.com · service@hofmann-ge.com**

TEEWB711A3 11.07 Rev.G ETL geodyna 4800 L

Technical alterations reserved.